

LAZER

H I G H P E R F O R M A N C E L I G H T I N G



LAND ROVER DEFENDER 2020+ ROOF MOUNTING KIT (FOR VEHICLES WITHOUT ROOF RAILS)

FITTING INSTRUCTIONS

TECHNICAL SUPPORT

aaron@lazerlamps.com / sales@lazerlamps.com
+44 (0)1992 945601 / +44 (0)1992 677374

WHAT'S INCLUDED

- 2x Stainless Steel Mounting Bracket (LH/RH)
- 1x Anti-Theft Fastener Set (Various Sizes)
- 1x Spacer Set
- 4x M6 Security Fasteners
- 4x M8 Roof Ditch Spacers

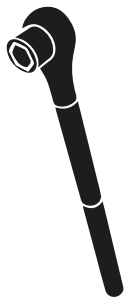
DIFFICULTY LEVEL



TOOLS REQUIRED



DRILL BIT
(SWITCH - 20MM)



METRIC
SOCKET SET



WIRE STRIPPERS
AND RACHET CRIMPERS



FLAT-HEAD / T-30 TORX
SCREWDRIVER



PLASTIC
TRIM TOOLS



WIRE CUTTERS

PRE-INSTALLATION CHECKS

Ensure battery is disconnected.

INSTALLATION

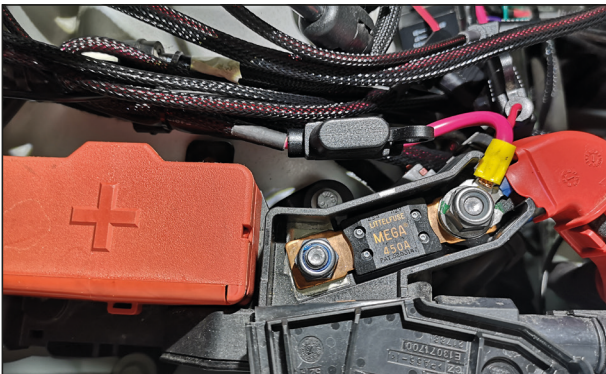
STEP 1

Install the relay from the wiring harness.



STEP 2

Connect the live from the wiring harness.



STEP 3

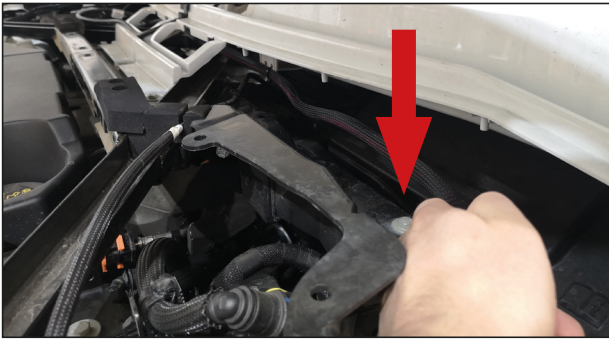
Connect the earth from the wiring harness.



STEP 4

Unscrew the clips and remove the scuttle panel trim.





STEP 5

Feed the cable across the scuttle panel ensuring the cable is secured with cable ties and away from any moving parts.



STEP 6

Remove the lower trim panel using a plastic trim tool, this will reveal a T30 torx screw.

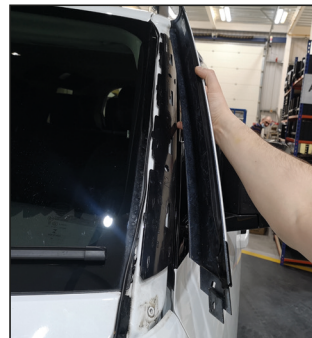
STEP 7



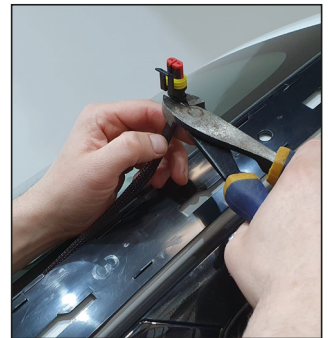
Undo the T30 torx screw.



Slide the A pillar trim downwards.



Trim can now be removed

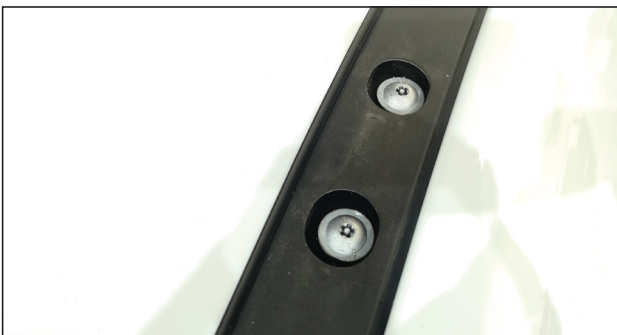


run the wiring harness cable up the 'A' pillar, and cut the plug.



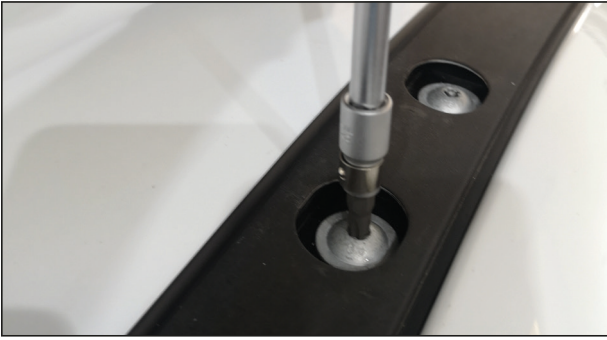
STEP 8

Remove the front rubber protection caps.



STEP 9

To reveal the 5 lobe security bolts (2 per side).



STEP 10

Remove bolts using the included extraction bit.



STEP 11

Install the M8X8mm spacers.

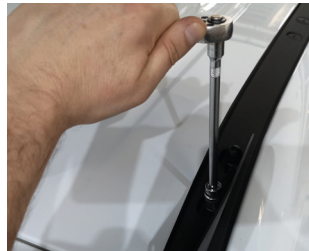


STEP 12

Place the brackets on the spacers, lining up the holes.



STEP 13



Install the included bolts to secure the brackets to the roof.



STEP 14

Secure the lamp to the roof using the included spacers and security bolts.



STEP 15

Crimp 2 of the included Butt connectors to the wiring-kit cable.



STEP 16

Cut the plug off of the lamp and strip the wire ends.



STEP 17



Connect the thin extension to the lazer harness using the butt connectors.



STEP 18

Using a plastic trim tool, carefully tuck the extension cable into the roof channel up the side of the windscreen, towards the bracket.



STEP 19

Use a cable tie through the 2 dedicated holes on the bracket to hold the cable and plug into place.



STEP 20



Connect the Lazer harness to the lamp and tidy the wiring.



STEP 21

If installing a switch, please run the switch cable through the factory grommet on the drivers side of the vehicle.



STEP 22

Mount the switch in a suitable location.



STEP 23

Plug in the lamp and tidy any loose wiring.

Test lamp is working correctly before re-assembling vehicle.



LAZER
HIGH PERFORMANCE LIGHTING

WWW.LAZERLAMPS.COM

+44 (0)1992 677374
sales@lazerlamps.com

Lazer Lamps Ltd, Units 1&2 Harlow Mill Business Centre,
Riverway, Harlow, Essex. CM20 2FD. United Kingdom



MADE IN THE UK



/LAZERLAMPS



/LAZERLAMPS