

LAZER

H I G H P E R F O R M A N C E L I G H T I N G



TOYOTA HILUX

TRIPLE-R 16 LOWER GRILLE INSTALL

FITTING INSTRUCTIONS

ANLEITUNG

INSTRUCTIONS

INSTRUCCIONES

TECHNICAL SUPPORT

aaron@lazerlamps.com / sales@lazerlamps.com
+44 (0)1992 945601 / +44 (0)1992 677374

WHAT'S REQUIRED

- 1x TRIPLE-R 16 LED SPOTLIGHT (WIRING HARNESS INCLUDED)
- 1x TOYOTA HILUX MOUNTING KIT

DIFFICULTY LEVEL



TOOLS REQUIRED



DRILL BIT
5MM



METRIC
SOCKET SET



WIRE STRIPPERS
AND RATCHET CRIMPERS



WIRE CUTTERS



RIVET GUN



ALLEN KEY
SIZE: 5



PHILLIPS
SCREWDRIVER



PLASTIC
TRIM TOOLS

PRE-INSTALLATION CHECKS

Ensure battery is disconnected.

BUMPER REMOVAL



STEP 1



Remove the 8x retaining clips and remove the top of the bumper.



STEP 2

Remove the bolts on both sides of the vehicle that are holding in the sides of the grille.



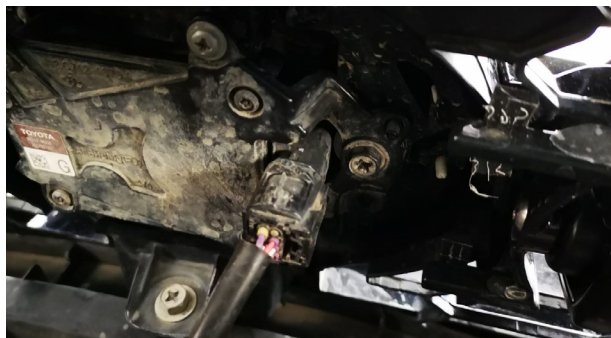
STEP 3

Un-clip the side clips on both sides of the vehicle.



STEP 4

Un-clip the sides of the grille.



STEP 5

Unplug the sensor.

BUMPER REMOVAL CONTINUED



STEP 6

Remove the 11x bolts at the bottom of the bumper.



STEP 7

Remove the 2x screws on the inside of both wheel arches.



STEP 8

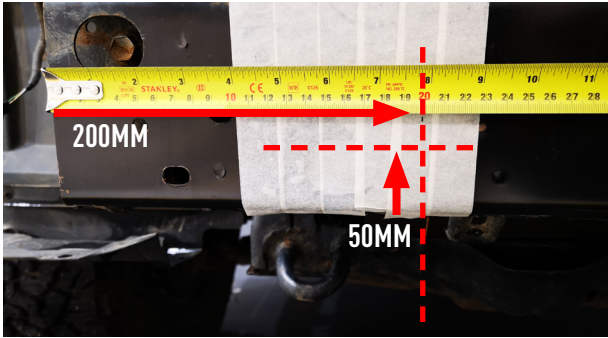
Gently pull out the sides of the bumper.



STEP 9

The bumper can now be removed.

MOUNTING YOUR LIGHT



STEP 1

Mark 50mm from the bottom of the bumper beam bar and 200mm from either end of the bumper beam bar.



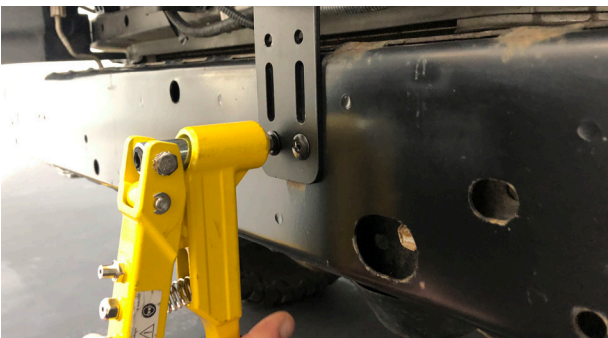
STEP 2

Mark where you will rivet the brackets in place.



STEP 3

Drill the 4x 5mm holes for the rivets.



STEP 4



Using a rivet gun, rivet the brackets in place.



STEP 5

Mount the Centre Brackets that are included with the Triple-R 16 light bar to the brackets.

MOUNTING YOUR LIGHT CONTINUED



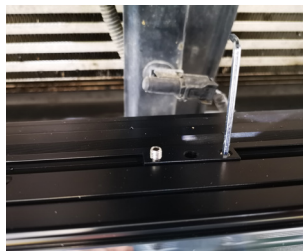
STEP 6

Slide the light on to the centre mounts and position the light in place. Then tighten the M5 grub screws on the centre mounts.



STEP 7

Position the stay bar mount in the middle of the lamp and tighten M5 grub screws.



STEP 8

Mount the Stay-bar to the channel mount.



STEP 9

Bend the Stay-bar into position to secure to vehicle



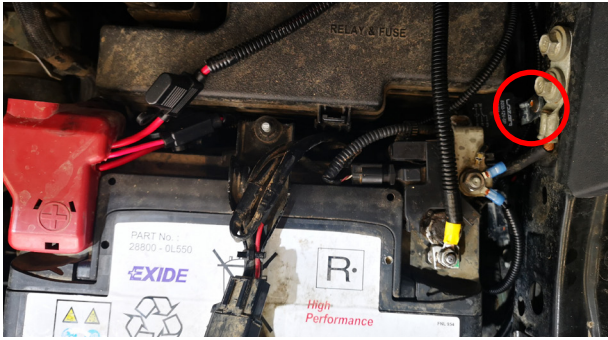
STEP 10

Mount the Stay-Bar in place.

(care must be taken when drilling the holes to ensure you don't into the radiator)



WIRING

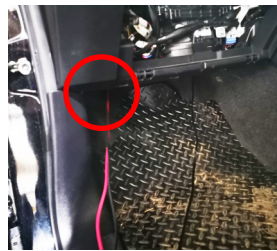


STEP 1

Install the relay close to the battery and connect the live and earth to the battery.



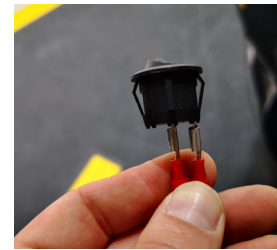
STEP 2



Remove Switch from the crimp terminals and route the switch wires through the cable grommet (we recommend sealing with sealant), the wires will go through to the passengers footwell.



STEP 3



Drill a 20mm hole to facilitate the switch and mount the switch in the suggested location shown (side of the steering wheel).

Feed the cables from the footwell and re-connect switch to the crimp terminals.

INSTALLATION CHECKS

Test light bar is working fully before re-assembling vehicle.



LAZER

H I G H P E R F O R M A N C E L I G H T I N G

Thank you for choosing a Lazer Lamps product.
Vielen Dank dafür, dass Sie sich für ein Produkt von Lazer Lamps entschieden haben.
Merci pour choisir un produit de Lazer Lamps.
Gracias por la seleccion de productos de Lazer Lamps.