

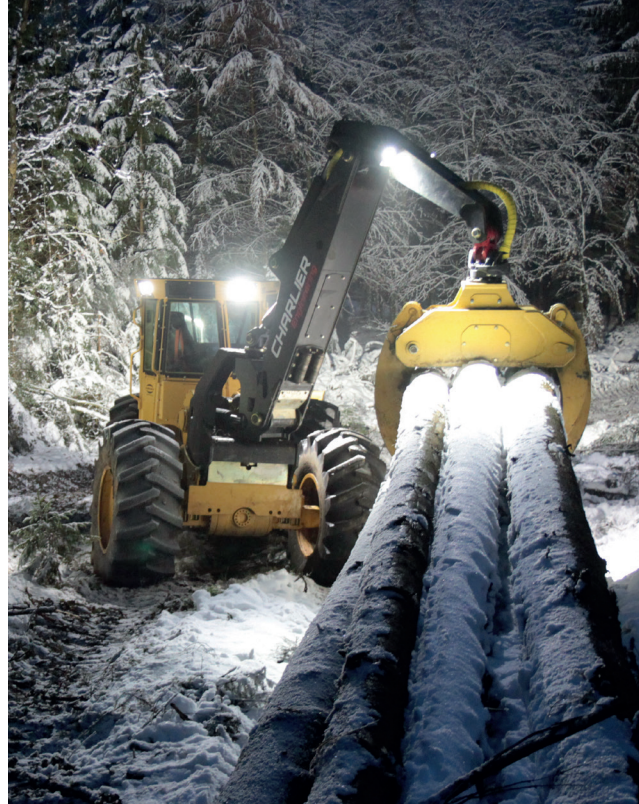
# UTILITY 80

The Utility-80 is a heavy-duty work light that delivers impressive visibility, with high intensity and spread of light, facilitating safer and more productive work environments. The 50 lux line, defined by HSE as the effective level of illumination when working outdoors at night, is achieved at 14m distance, with a spread of 74 degrees. Combined with design features for maximising functionality and reliability, this is a product that can be relied on to deliver exceptional performance, time after time, whatever the application.

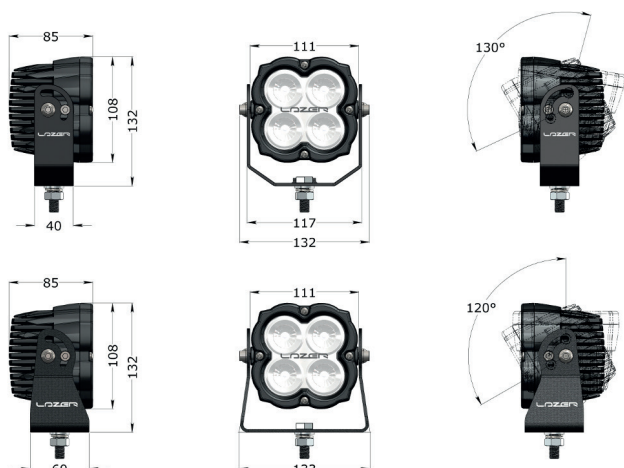


# UTILITY 80

- High density LED's
- Vacuum-metallised optics deliver wide spread of light
- Versatile mounting bracket
- EMC protected
- Electronic thermal management
- ADR (ECE/TRANS/242) compliant version available
- Supplied with slim-line or wide mount
- CAE optimised 'Matrix' cooling system
- Designed & manufactured in the UK

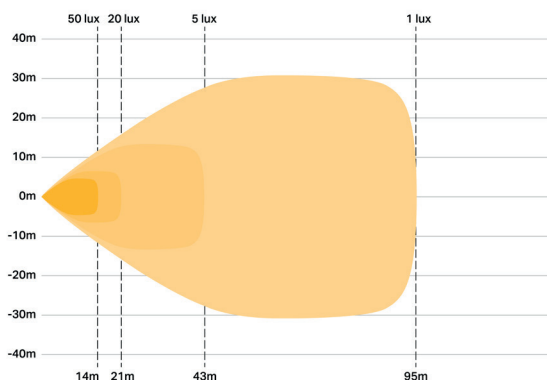


## DIMENSIONS - measurements in mm.



## PHOTOMETRIC DATA

50 Lux represents HSE guidelines for effective illumination when working outdoors at night.



## LAMP SPECIFICATIONS

WEIGHT	1.2kg
VOLTAGE RANGE	10-32V
RAW LUMENS	8820 LUMENS
COLOUR TEMPERATURE	5000 KELVIN
LED LIFE	50,000 HOURS
POWER CONSUMPTION	80 WATTS
CURRENT DRAW (14.4V)	5.5 AMPS
CONNECTOR	2-PIN DEUTSCH DT (+28CM CABLE)
BEAM ANGLE	74 DEGREES

## CERTIFICATION

IP RATING	IP68 / IP69K
EMC CERTIFICATION	ECE REG 10
EMC PROTECTION	CISPR-25 (CLASS 3)
SALT SPRAY TEST	ISO 9227
DUMP LOAD PROTECTION	ISO 7637-2

