

# LAZER

H I G H P E R F O R M A N C E L I G H T I N G



## ISUZU DMAX 2017+ LOWER GRILLE INSTALL

---

**FITTING INSTRUCTIONS**

**ANLEITUNG**

**INSTRUCTIONS**

**INSTRUCCIONES**

## TECHNICAL SUPPORT

aaron@lazerlamps.com / sales@lazerlamps.com  
+44 (0)1992 945601 / +44 (0)1992 677374

## WHAT'S REQUIRED

- 2x ST4 Evolution
- 1x Two Lamp Harness Kit
- 1x Isuzu Dmax ST4 Mounting Kit

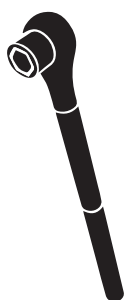
## DIFFICULTY LEVEL



## TOOLS REQUIRED



DRILL BIT  
5MM



METRIC  
SOCKET SET



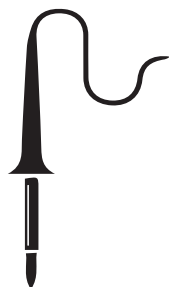
WIRE STRIPPERS  
AND RATCHET CRIMPERS



WIRE CUTTERS



ALLEN KEY SET



SOLDERING  
IRON



T-25 TORX  
SCREWDRIVER

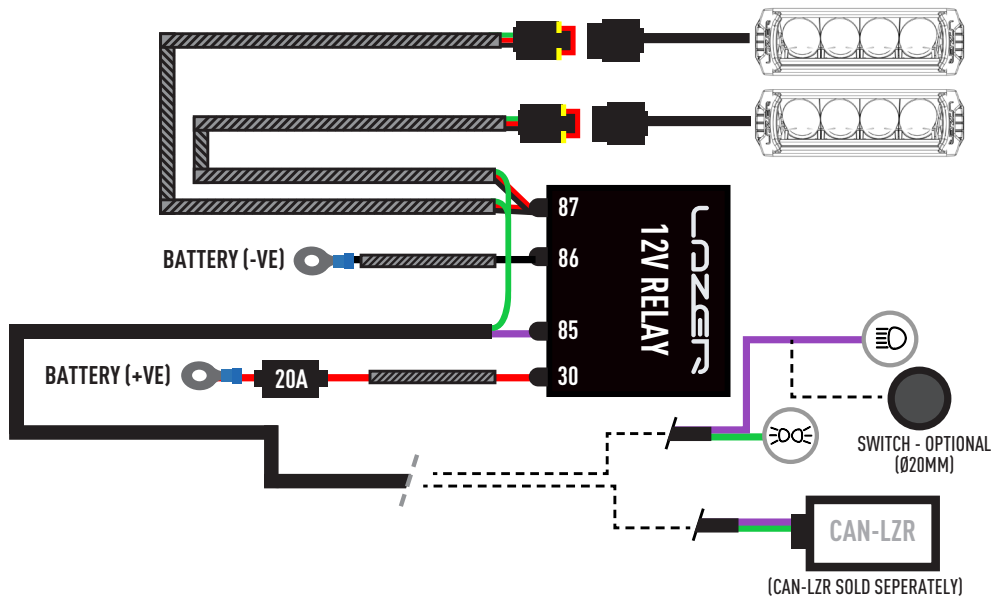


PLASTIC  
TRIM TOOLS

## PRE-INSTALLATION CHECKS

1. Ensure battery is disconnected.

## WIRING



## STEP 1

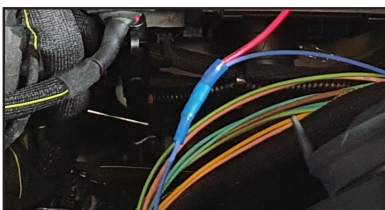
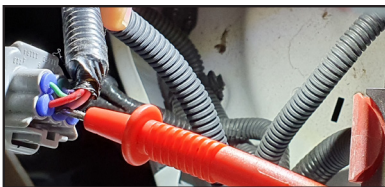
Locate the headlamp high beam wire which has positive voltage going to the bulb (not the ground wire coming back from the bulb!).

## STEP 2

Cut the vehicle high beam wire approximately 100mm from the connector, strip wire ends 7mm and twist strands.

## STEP 3

Strip wire end from Lazer wiring harness (p/n 2L-LP-120/2L-LP-PL-120), from relay position 85



## STEP 4

Connect all high beam wires from the wiring harness to the pink wire from the back of the left headlight plug using supplied butt connectors.

**STEP 5**

Connect ground wire from harness to grounding point in engine bay (or on -ve battery terminal).

**STEP 6**

Connect fused wire to positive terminal on battery. Cable-tie loose wires as required.

**STEP 7**

Locate relay as pictured:

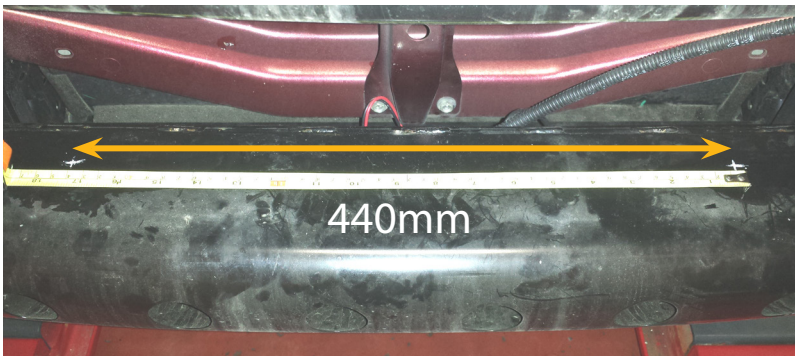


**MOUNTING YOUR LIGHTS**

(These fitting instructions relate to installation of Lazer ST4 Evolution spotlights in the lower grille of the MY17 D-max. Guidelines for mounting lights on older models are available on request from: [sales@lazerlamps.com](mailto:sales@lazerlamps.com))

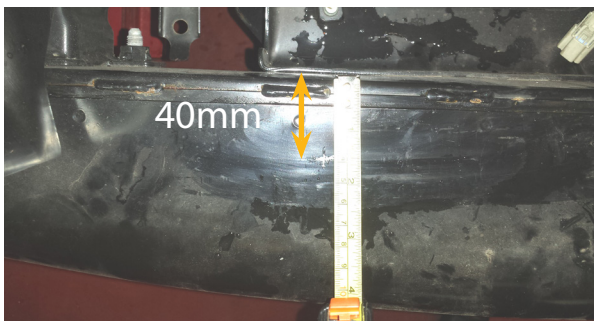
**STEP 1**

Remove bumper fascia, then mark the drill holes for the lamps at 440mm apart, symmetrical about the centre point of the bumper beam bar.



**STEP 2**

Mark 40mm from the rear.



**STEP 3**

Attach Riv-nut into bumper beam holes - this might require temporary removal of the upper beam bar.



#### STEP 4

Fix the lamp mount on to lamp with the orientation shown.



#### STEP 5

Use M8 x 25mm socket cap head to screw lamp on to bumper beam (note M8 hex head bolt supplied in bracket bag can be discarded when using the riv-nut fastening method).

#### STEP 6

Aim lights, check functionality and tighten, before re-attaching bumper fascia to the vehicle.

### TROUBLE SHOOTING

ISSUE: Lamps don't illuminate after wiring system.

- Check that the High Beam wire carrying +ve voltage has been selected, and not the ground wire coming from the bulb.
- Check fuse in harness.
- Check that relay is switching. If not, check there is +ve voltage at relay when main beam lights are activated. If not, then check splice.

**LAZER**  
HIGH PERFORMANCE LIGHTING

[WWW.LAZERLAMPS.COM](http://WWW.LAZERLAMPS.COM)

+44 (0)1992 677374  
[sales@lazerlamps.com](mailto:sales@lazerlamps.com)

Lazer Lamps Ltd, Units 1&2 Harlow Mill Business Centre,  
Riverway, Harlow, Essex. CM20 2FD. United Kingdom



MADE IN THE UK



/LAZERLAMPS



/LAZERLAMPS