

# LAZER

H I G H P E R F O R M A N C E L I G H T I N G



## VW CADDY 2021+ BUMPER BEAM MOUNTING KIT

---

**FITTING INSTRUCTIONS**

**ANLEITUNG**

**INSTRUCTIONS**

**INSTRUCCIONES**

## TECHNICAL SUPPORT

aaron@lazerlamps.com / sales@lazerlamps.com  
+44 (0)1992 945601 / +44 (0)1992 677374

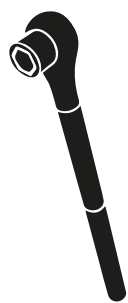
## WHAT'S REQUIRED

- 1x Linear-18
- 1x Single Lamp Harness Kit
- 1x Bumper Beam Clamp Mounting Kit (Part no.)
- Optional: 1x Lazer CAN interface (if your vehicle has LED headlights and you are unable to find a 12V signal from the highbeam headlight trigger.

## DIFFICULTY LEVEL



## TOOLS REQUIRED



**METRIC  
SOCKET SET**



**WIRE STRIPPERS  
AND RATCHET CRIMPERS**



**WIRE CUTTERS**



**T-25 TORX  
SCREWDRIVER**



**PLASTIC  
TRIM TOOLS**



## PRE-INSTALLATION CHECKS

Ensure battery is disconnected.

## BUMPER REMOVAL



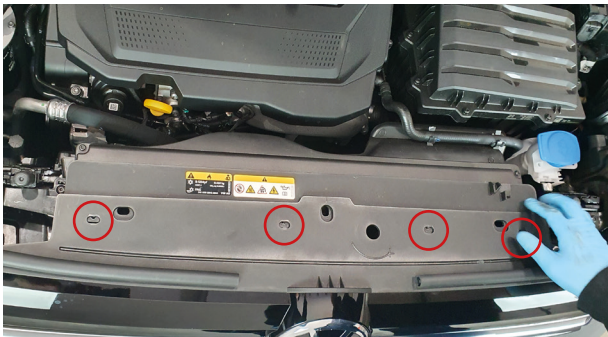
### STEP 1

Push the clip lever on the bonnet release forward.



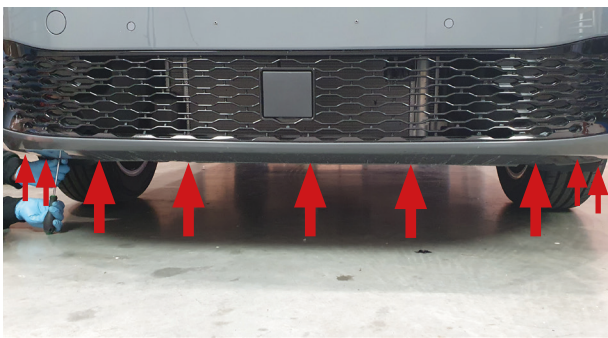
### STEP 2

Pull the bonnet release catch up and remove.



### STEP 3

Remove the x4 Torx 25 screws securing the top of the grille.



### STEP 4

Remove the x9 Torx 25 screws under the bumper.



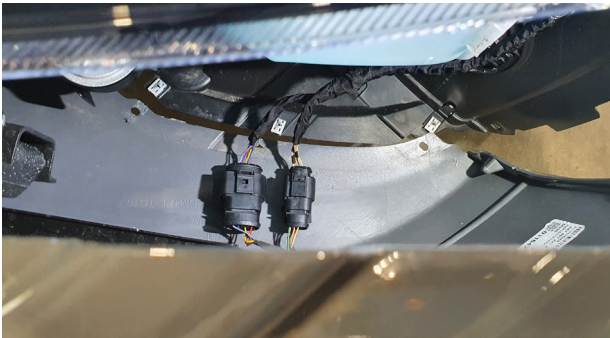
### STEP 5

Remove the 3 Torx 25 screws from both sides of the inner wheel arch lining.



### STEP 6

Gently pull the edge of the bumper out on both sides.



### STEP 7

On the Left Hand side of the vehicle, unplug the electrical plugs attached to the bumper.

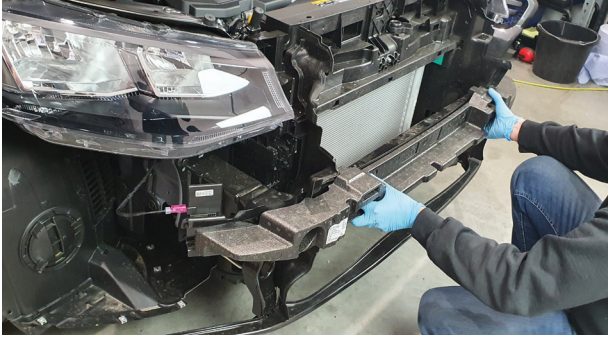


### STEP 8

The bumper can now be removed and set safely to one side.



## FITTING YOUR LAMP



### STEP 1

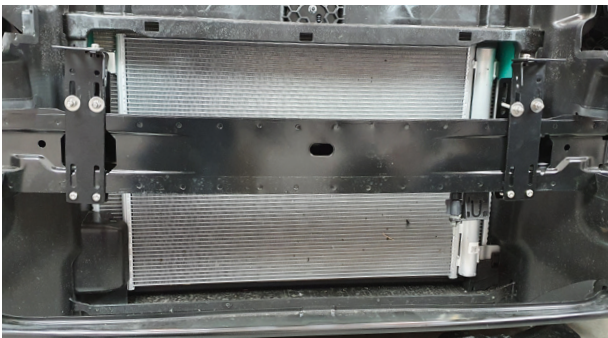
Remove the Polystyrene insert from the crash bar.



### STEP 2



Brackets will need to be assembled with the side brackets as shown.



### STEP 3

Install the brackets at either side including the Linear side mounting brackets, around the crash bar.



### STEP 4

Install Linear 18 lamp onto the brackets and make any necessary adjustments to the side and bumper beam brackets to ensure lamp is sitting central.



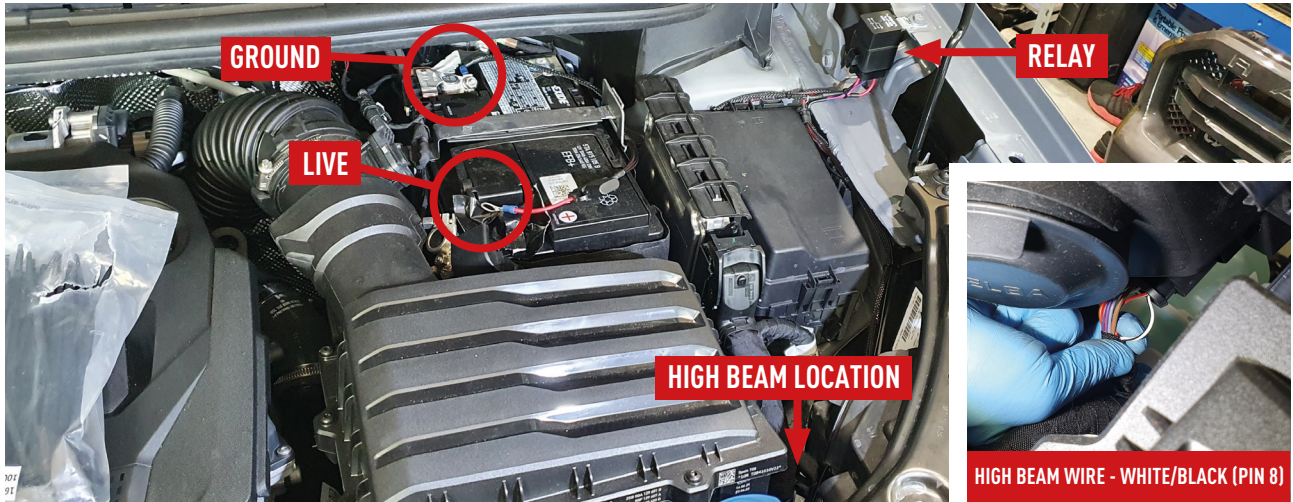
### STEP 5

Cut the 4 inner vertical veins off of the bumper and Remove any excess material to give a flush fitting, this can be done via sanding, filing or rotary tool.

Take care not to damage the paint on the bumper.

## STEP 6

Connect the Lazer wiring harness as shown below:



## STEP 7

Reposition bumper and make any required adjustments to lamp height and depth.

Test the light function before reinstalling bumper screws.

## WIRING INFORMATION

For instructions on wiring a Linear-18 Elite with Intelligent Low-beam, please refer to the instruction leaflet in the lamps box.

### IMPORTANT INFORMATION!

When you start any VW MY06+ after having the battery disconnected the dashboard will display multiple errors. To reset the errors please follow steps below:

- 1: TURN ENGINE ON
- 2: TURN WHEELS FULL LOCK TO LEFT
- 3: TURN WHEELS FULL LOCK TO RIGHT
- 4: SWITCH IGNITION OFF
- 5: RESTART VEHICLE AND ERRORS WILL DISAPPEAR





**LAZER**  
HIGH PERFORMANCE LIGHTING

[WWW.LAZERLAMPS.COM](http://WWW.LAZERLAMPS.COM)

+44 (0)1992 677374  
[sales@lazerlamps.com](mailto:sales@lazerlamps.com)

Lazer Lamps Ltd, Units 1&2 Harlow Mill Business Centre,  
Riverway, Harlow, Essex. CM20 2FD. United Kingdom



MADE IN THE UK



/LAZERLAMPS



/LAZERLAMPS