

# TRIPLE-R 750 WIDE

Boasting the very latest high efficiency LED technology, the Triple-R 750 is a high-performance driving light that delivers an impressive 4,620 lumens in the form of a wider spot beam pattern which is well suited to both road and off-road applications. The Triple-R 750 wide offers a wider spread of light (40 degrees) which qualifies the lamp for a lower E-Mark Reference number - 20.



2x TRIPLE-R 750 **WIDE**






## TRIPLE-R 750 WIDE

- A wide 40 degrees left/right spread of light qualifies the lamp for a lower E-Mark Reference number - 20
- Ultra long-range optics optimised for road and race applications
- High intensity LED's deliver exceptional luminosity and left/right spread
- Component technology shared with WRC lighting solutions
- CAE optimised heatsink
- Electronic thermal management
- 'Unbreakable' polycarbonate lens with hardcoat
- UNECE Reg 149 Class B Driving Light, approved for on-road high beam

### TECHNICAL SPECIFICATIONS

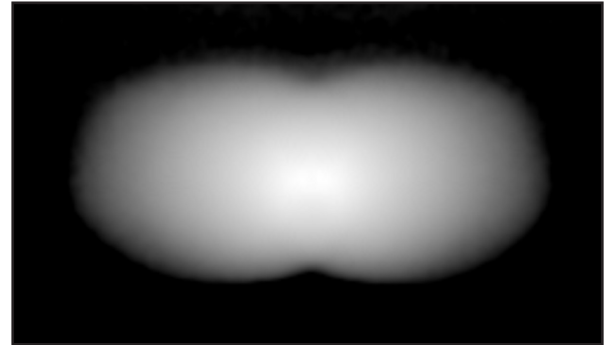
Based on 1x lamp (Triple-R 750 Wide).

E-MARK REF	20	
VOLTAGE RANGE	10V - 32V	
TOTAL LUMINOUS FLUX	4620 Lm	
TOTAL DRIVER 'FOV' FLUX*	2633 Lm	
BEAM DISTANCE (0.25LX)	587m	
# HIGH POWER LEDS	4	
POWER CONSUMPTION	44 Watts	
CURRENT DRAW (14.4V)	3.1 Amps	
LED LIFE	50,000 Hrs	
WEIGHT	1kg	

\* Driver FOV flux is a measure of effective lumens taking consideration of the amount of light in a driver's 'field-of-view' defined as an area +/- 45° left/right, and +/- 10° up/down.

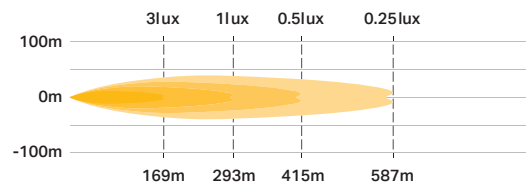
### BEAM DISTRIBUTION

Horizontal Spread: 40° / Vertical Spread: 20°.



### PHOTOMETRIC DATA

Based on 1x lamp (Triple-R 750 Wide).



### DIMENSIONS

Measurements in mm.

