

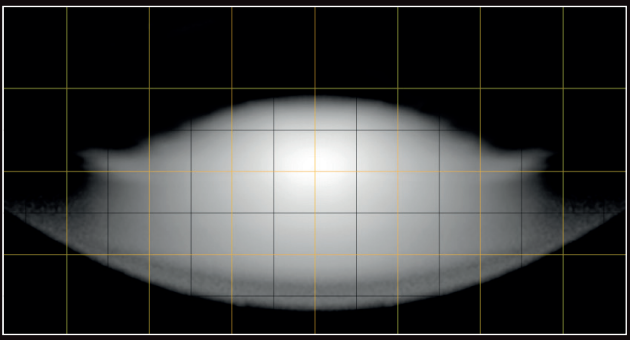
# LINEAR-24 FLOOD



Adding to our 'Utility Series' range of heavy-duty work lights, the Linear-24 Flood. Designed and engineered specifically for industrial sectors, the Linear-24 Flood challenges conventional work light solutions, delivering incredible levels of short-range illumination, making potentially high-risk workplaces both safer and more productive. Adopting the same high-output LED arrangement as found in our Linear Elite range, the Linear-24 Flood produces 16,200 raw lumen, and which combined with a customised assembly of ultra-reflective, vacuum-metallised optics, delivers 'zonal' lighting perfectly aligned to work cabs, whether mining or construction, forestry or agriculture.



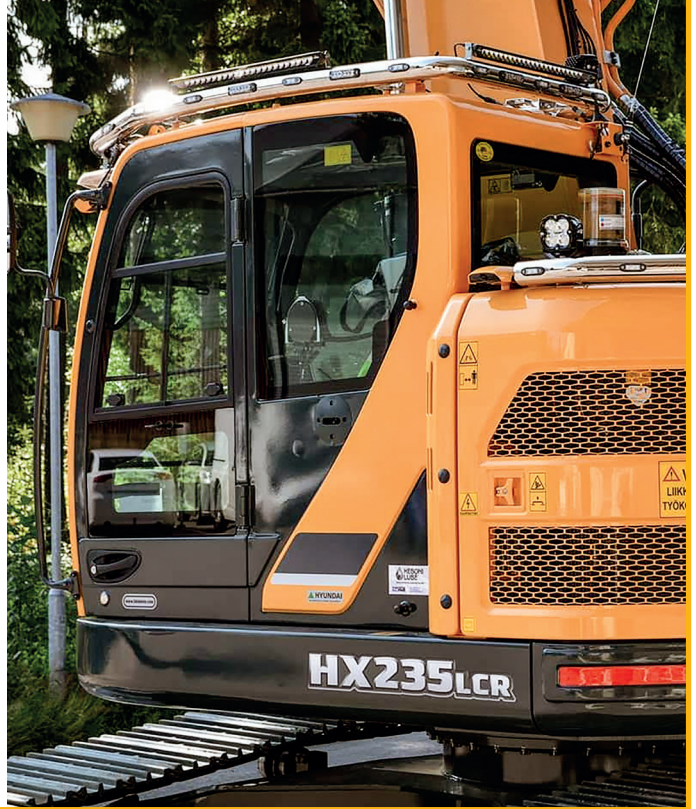
## BEAM DISTRIBUTION (HORIZONTAL: 110° / VERTICAL: 51°)



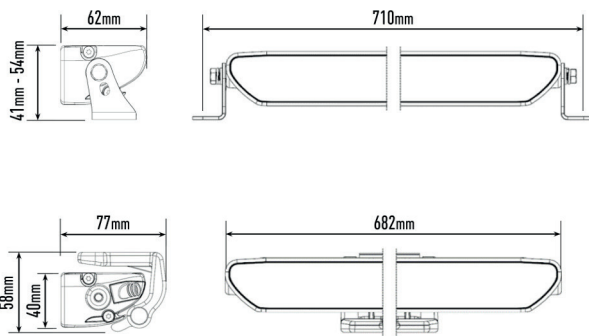
BEAM PATTERN

# LINEAR-24 FLOOD

- High output work light for industrial applications.
- Utilises the latest, highly efficient LED technology.
- Customised arrangement of vacuum-metallised optics delivers 'zonal' lighting.
- Light output optimised for exceptional levels of illumination in immediate (<20m) working environment.
- Colour temperature - 5000 kelvin.
- Supplied with stainless steel, side mounting brackets.
- Electronic thermal management
- 'Unbreakable' polycarbonate lens
- IP68 watertight
- 2 year warranty (5 year for Automotive/Commercial Fleet applications)
- Supplied with male/female 2-pin Deutsch connectors
- Designed & manufactured in Britain

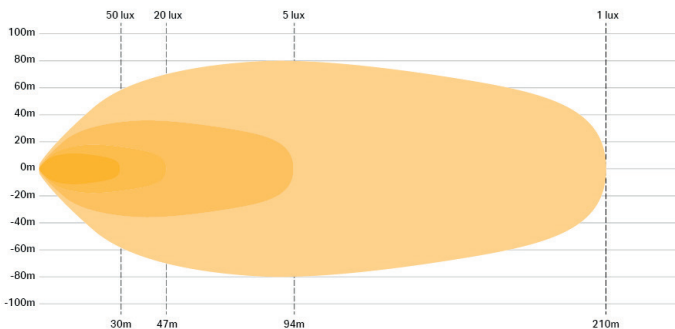


## DIMENSIONS - measurements in mm.



## PHOTOMETRIC DATA

50 Lux represents HSE guidelines for effective illumination when working outdoors at night.



## LAMP SPECIFICATIONS

WEIGHT	1.5 KG
VOLTAGE RANGE	10-32V
RAW LUMENS	16,200 LUMENS
EFFECTIVE LUMENS	11,534 LUMENS
COLOUR TEMPERATURE	5000 KELVIN
LED LIFE	50,000 HOURS
POWER CONSUMPTION	168 WATTS
CURRENT DRAW (14.4V)	11.7 AMPS
CONNECTOR	2-PIN DEUTSCH DT (+28CM CABLE)

## CERTIFICATION

IP RATING	IP68 / IP69K
EMC CERTIFICATION	ECE REG 10
EMC PROTECTION	CISPR-25 (CLASS 3)
SALT SPRAY TEST	ISO 9227
DUMP LOAD PROTECTION	ISO 7637-2

**LAZER**  
HIGH PERFORMANCE LIGHTING