

LAZER

H I G H P E R F O R M A N C E L I G H T I N G



FORD RANGER RAPTOR 2019+ TRIPLE-R 1250 MOUNTING KIT

FITTING INSTRUCTIONS

ANLEITUNG

INSTRUCTIONS

INSTRUCCIONES

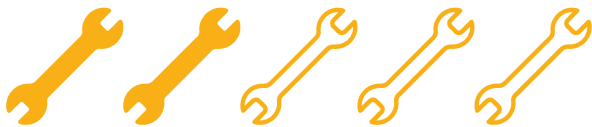
TECHNICAL SUPPORT

aaron@lazerlamps.com / sales@lazerlamps.com
+44 (0)1992 945601 / +44 (0)1992 677374

WHAT'S REQUIRED

- 1x TRIPLE-R 1250 STANDARD OR SMARTVIEW
- 1x ONE LAMP HARNESS KIT (NOT REQUIRED FOR SMARTVIEW)
- 1x CANBUS HIGHBEAM INTERFACE (OPTIONAL)
- 1x FORD RANGER RAPTOR (2019+) MOUNTING KIT

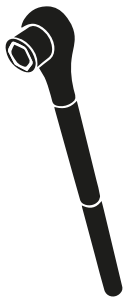
DIFFICULTY LEVEL



TOOLS REQUIRED



ALLEN KEY SET



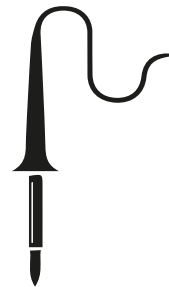
METRIC
SOCKET SET



WIRE STRIPPERS
AND RATCHET CRIMPERS



WIRE CUTTERS



SOLDERING IRON
(OPTIONAL)

PRE-INSTALLATION CHECKS

1. Ensure battery is disconnected.

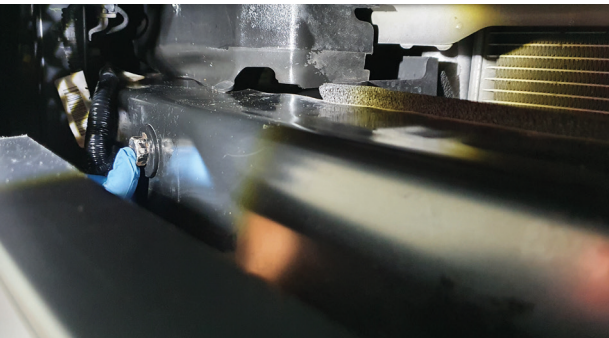
INSTALLATION PROCESS



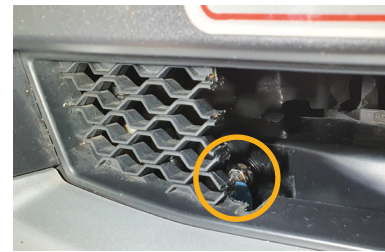
STEP 1



Cut straight down at the top of the angled viens on both sides of the lower outer grilles.



STEP 2



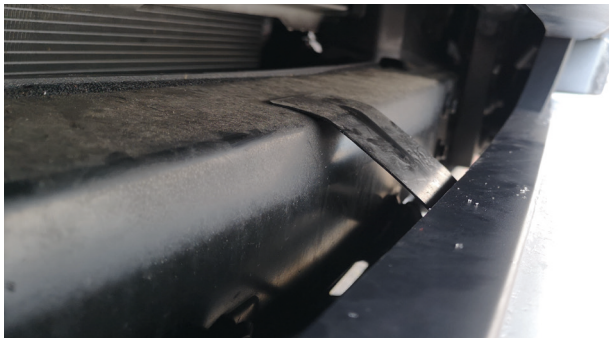
Remove the upper 15mm bolts from the crash bar.



STEP 3



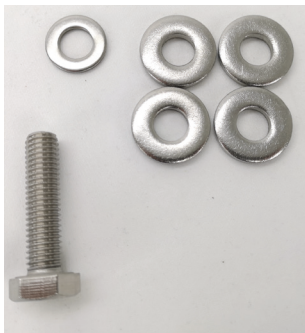
Place bracket on the crash bar, in the orientation shown, where you have removed the bolts and then loosely re-install bolts.



STEP 3.1

Some Ford Ranger Raptors have this link piece on the front crash bar which then hinders the Triple R 1250 mounted and sitting at 90 degrees.

The lamp brackets need to be spaced 15mm away from the crash bar.



STEP 3.2

If your Ford Ranger Raptor has the link piece above, please use the additional 4 washers per bracket as shown, to allow the lamp to sit forward in front of the link piece in the lower grille.



STEP 4

Position the lamp in place and tighten the bolts on the crash bar once you are happy with the positioning.



STEP 5



Secure the lamp to the brackets, from the underside of the vehicle, using the fasteners supplied.

WIRING UP YOUR LIGHT

For instructions on wiring the Triple-R Smartview or Low-beam assist please refer to the Quick-start guide leaflet in the lamps box.



STEP 1

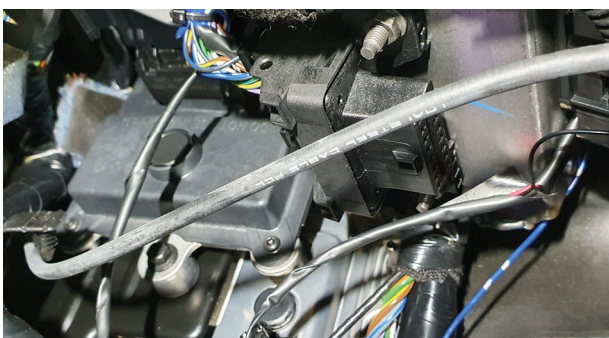
If the vehicle doesn't produce a 12V signal when highbeam is activated, you will need to wire the lights via the Lazer CAN Interface. If you do not need a CANM8, skip to step 4.

To do this you would need to feed the fine red cable from Lazer wiring kit through the cable entry grommet (located at the bulkhead - indicated by the yellow arrow).



STEP 2

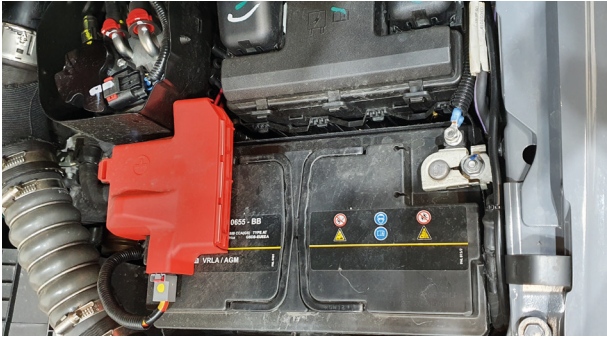
Locate the cable inside the vehicle which feeds through the cable grommet to the footwell.



STEP 3

Install the Lazer CAN interface, and connect then CAN HI and CAN LO wires (located at the 2nd OBD port, within the drivers kickwell).

For vehicle specific CAN instructions, please download the 'CANM8 Connect' App and scan the QR code on the front of the interface.



STEP 4

Install the relay and connect the live and earth to the battery, the high beam trigger is taken from the back of the headlight.



STEP 5

Feed the lamp connector(s) through to the front of the bumper and connect to lamp.

Re-connect battery and test lamp is working correctly.

LAZER
HIGH PERFORMANCE LIGHTING

Thank you for choosing a Lazer Lamps product.
Vielen Dank dafür, dass Sie sich für ein Produkt von Lazer Lamps entschieden haben.
Merci pour choisir un produit de Lazer Lamps.
Gracias por la seleccion de productos de Lazer Lamps.