

LAZER

H I G H P E R F O R M A N C E L I G H T I N G



DEFENDER ROOF MOUNTING KIT

FITTING INSTRUCTIONS

ANLEITUNG

INSTRUCTIONS

INSTRUCCIONES

WHAT'S INCLUDED

- 2x STAINLESS STEEL MOUNTING BRACKET (LH/RH)
- 1x ANTI-THEFT FASTENER SET (VARIOUS SIZES)
- 1x SPACER SET (VARIOUS SIZES)
- 4x M6 FASTENERS plus WASHERS, NUTS and NUT CAPS
- 2x CABLE GROMMETS
- 1x VHB CLEANING SACHET
- 2x BUTT CONNECTORS

DIFFICULTY LEVEL



TOOLS REQUIRED



DRILL BIT
20MM / 9.5MM / 6MM



SPANNER
10MM



WIRE STRIPPERS
AND RATCHET CRIMPERS



WIRE CUTTERS



SOCKET WRENCH



PHILLIPS
SCREWDRIVER



PLASTIC TRIM TOOLS

STEP 1: HEADLINING REMOVAL

1. Remove A pillar trims.



2. Remove sun visors.



3. Carefully remove rear view mirror and base.



4. Remove Interior Lights.



5. Remove ultra sonic module.



6. Remove the push-in clips from around the headlining.



THE HEADLINING CAN NOW BE REMOVED.

STEP 2: WIRING

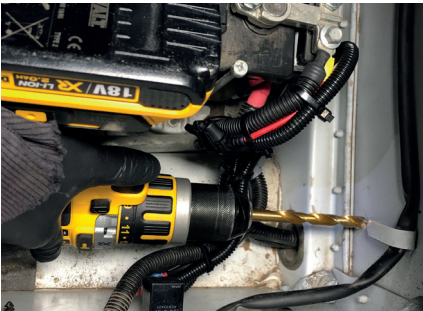
1. Undo the 4x bolts holding in the left hand seat. Remove seat to access battery.



2. Disconnect the battery



3. Drill a 9.5mm hole from the bottom of the battery compartment into the left hand footwell to run the lamp and switch wires.



4. Find a suitable location for the relay and mount relay as shown.



5. Re-connect the battery and connect live and earth wires from relay to the battery.



6. Remove the lamp connector from the wiring harness and route cables through the supplied cable grommet through to the left footwell.



7. Run the lamp wire as shown up to the left hand 'A pillar' as shown below.



8. Drill a 20mm hole in a suitable location for the switch and run wires. Example below.



9. Drill the 9.5mm cable entry hole in the side of the roof, 75mm from the front of the gutter, 30mm in height.



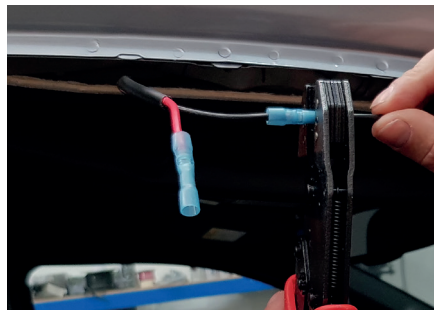
10. Remove connector from the lamp.



11. Prepare surface using VHB cleaning wipe, apply sealant and install cable grommet. Then feed lamp cable through the cable grommet into the cab.

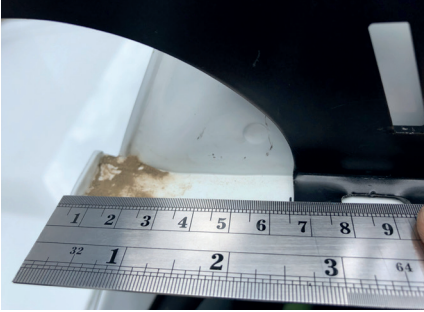


12. Connect the wiring harness and lamp harness using the supplied blue butt connectors, the connection can be made in the headlining.



STEP 3: FITTING THE BRACKETS

1. Mark out 65mm (Linear-42) or 45mm (Triple-R 28) from the front of the roof gutter for bracket position.



2. Drill out 2x 6mm holes to use for mounting the brackets.



3. Mount both the brackets in place using the supplied nuts and bolts.



4. Use the included spacers and anti-theft hardware to mount the lamp to the brackets and apply nut caps.



STEP 4: TEST LIGHT BAR IS WORKING CORRECTLY BEFORE YOU RE-ASSEMBLE VEHICLE



Thank you for choosing a Lazer Lamps product.

Vielen Dank dafür, dass Sie sich für ein Produkt von Lazer Lamps entschieden haben.

Merci pour choisir un produit de Lazer Lamps.

Gracias por la seleccion de productos de Lazer Lamps.

LAZER
HIGH PERFORMANCE LIGHTING

T: +44 (0)1992 677374

E: SALES@LAZERLAMPS.COM

W: WWW.LAZERLAMPS.COM

Lazer Lamps Ltd, Units 1&2 Harlow Mill Business Centre, Riverway, Harlow,
Essex. CM20 2FD. United Kingdom



MADE IN THE UK



/LAZERLAMPS



/LAZERLAMPS