

# LAZER

H I G H P E R F O R M A N C E L I G H T I N G



## VW TRANSPORTER 6.1 (WITH AIR-CON) GRILLE INTEGRATION KIT FOR TRIPLE-R 750

---

**FITTING INSTRUCTIONS**

**ANLEITUNG**

**INSTRUCTIONS**

**INSTRUCCIONES**

## TECHNICAL SUPPORT

aaron@lazerlamps.com / sales@lazerlamps.com  
+44 (0)1992 945601 / +44 (0)1992 677374

### WHAT'S REQUIRED

- VW T6.1 GRILLE INTEGRATION KIT
- CANM8 HIGH BEAM INTERFACE

### DIFFICULTY LEVEL



### TOOLS REQUIRED



DRILL BIT  
3.5MM



SPANNER  
10MM



WIRE STRIPPERS  
AND RATCHET CRIMPERS



WIRE CUTTERS



HACKSAW



ALLEN KEY  
SIZE: 4



PHILLIPS / T-25 TORX  
SCREWDRIVER



PLASTIC  
TRIM TOOLS



SOLDERING  
IRON



## BUMPER REMOVAL

### STEP 1

Remove the battery before you start to remove the bumper.

#### IMPORTANT INFORMATION!

When you start any VW MY06+ after having the battery disconnected the dashboard will display multiple errors. To reset the errors please follow steps below:

- 1: TURN ENGINE ON
- 2: TURN WHEELS FULL LOCK TO LEFT
- 3: TURN WHEELS FULL LOCK TO RIGHT
- 4: SWITCH IGNITION OFF
5. RESTART VEHICLE

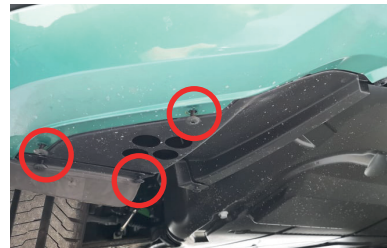


### STEP 2

Remove x4 plastic push rivets.



### STEP 3



Remove x12 screws on the underside of the bumper.



### STEP 4

Remove the screws on the inside of both wheel arches.



### STEP 5

The bumper can now be slowly removed from the vehicle.

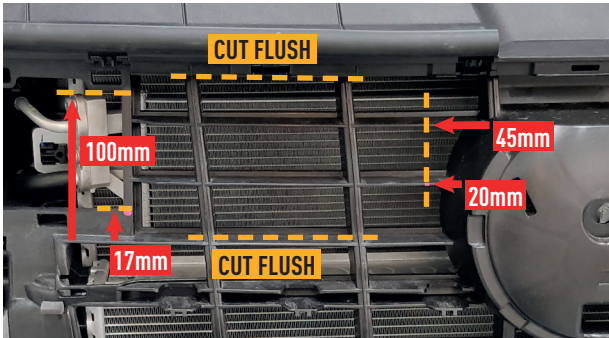
## INSTALLING THE LIGHTS



### STEP 1



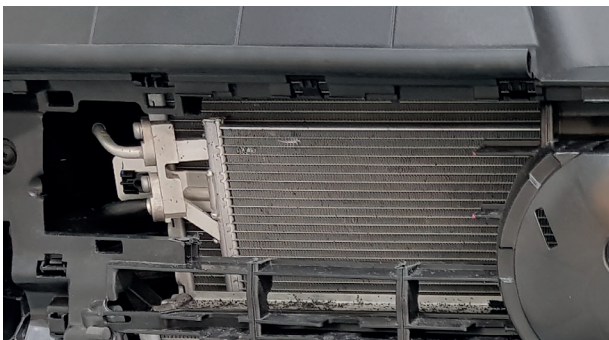
To install Triple-R 750's into a VW T6.1 the aircon pipe cover will need to be removed for the lights to fit.



### STEP 2

Additionally to removing the aircon pipe cover, some additional cutting of the 2nd grille behind the main grille will be required (drivers side only - you should be able to cut through the main grille and 2nd grille on the other side of the vehicle).

Mark with a paint pen or similar where to cut as per the measurements shown.



### STEP 3

Remove the parts of the grille that you have marked to be removed with a hacksaw.

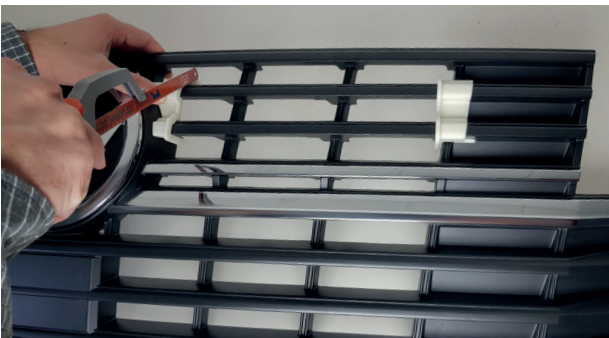
The bumper can then be reinstalled.



### STEP 4

Next images show grille off the vehicle, but installation should continue with the grille left on the vehicle.

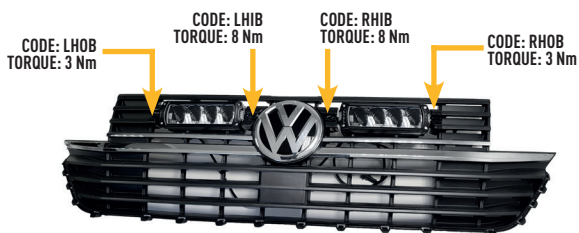
Place cutting guides on the grille as shown.



### STEP 5

Cut the vertical veins as per the cutting guides using a hacksaw.





**STEP 6**



Cut the horizontal veins leaving 10mm in tact.

Then remove the parts of the grille you have cut.

**STEP 7**



Fix the Grille Mount brackets to both lights as per the diagram shown.



**STEP 8**

Slide the lights into the grille (outboard first), ensuring the clips on the brackets are secured at the back of the grille.



**STEP 9**

Drill a 3.5mm hole for each inboard bracket for the self tapping screws as shown.



**STEP 10**

Secure the lights with a self tapping screw where you have pre-drilled the holes.



SCAN ME

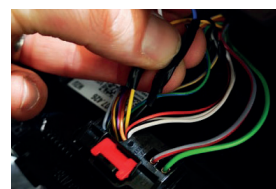
**CAN'T FIND A HIGH BEAM 12V SIGNAL?**

For vehicles that do not produce a constant 12v signal from the back of the headlight, these will require a CANbus interface. Please see our YouTube channel, or scan the QR code on the left, for more information regarding install of a CANbus interface.

**CANM8 INFOMATION**

The CAN wires are located in the plug at the rear of the climate control panel.

- RED > BATTERY LIVE FUSED 5A
- BLACK > GROUND/EARTH
- WHITE > CAN HI (YELLOW WIRE)
- BLUE > CAN LO (BLACK WIRE)
- PURPLE > HIGH BEAM OUTPUT (12V)





# LAZER

H I G H P E R F O R M A N C E L I G H T I N G

**Thank you for choosing a Lazer Lamps product.**

**Vielen Dank dafür, dass Sie sich für ein Produkt von Lazer Lamps entschieden haben.**

**Merci pour choisir un produit de Lazer Lamps.**

**Gracias por la seleccion de productos de Lazer Lamps.**