

# LAZER

H I G H P E R F O R M A N C E L I G H T I N G



## TOYOTA YARIS GR (2021+) BUMPER BEAM MOUNTING KIT

---

**FITTING INSTRUCTIONS**

**ANLEITUNG**

**INSTRUCTIONS**

**INSTRUCCIONES**

## TECHNICAL SUPPORT

aaron@lazerlamps.com / sales@lazerlamps.com  
+44 (0)1992 945601 / +44 (0)1992 677374

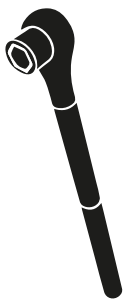
## WHAT'S REQUIRED

- 1x Linear-18
- 1x Single-Lamp Harness Kit
- 1x Bumper Beam Mounting Kit (BBB-01K)
- 1x Lazer CAN interface (Optional: CAN Contactless reader)

## DIFFICULTY LEVEL



## TOOLS REQUIRED



METRIC  
SOCKET SET



WIRE STRIPPERS  
AND RATCHET CRIMPERS



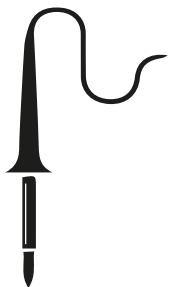
WIRE CUTTERS



T-30 TORX  
SCREWDRIVER



PLASTIC  
TRIM TOOLS



SOLDERING  
IRON



## PRE-INSTALLATION CHECKS

Ensure battery is disconnected.

## BUMPER REMOVAL



### STEP 1

Unclip the 2x retaining clips either end of the front grille (circled yellow).

Undo the 2x 10mm bolts (circled red).



### STEP 2

Undo the 4x 10mm bolts from the centre underneath of the bumper.



### STEP 3

Undo the 3x 10mm bolts from the left and right hand side, underneath of the bumper.



### STEP 4

Unclip the plastic push rivet from the inside of the wheel arch.

Then unclip the wheel arch lining. There are 2x clips per side.

Repeat on both sides of the vehicle.

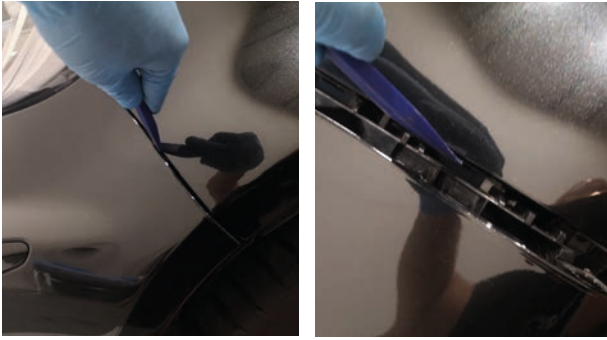


### STEP 5

Pull back the arch lining to reveal the bumper retaining clip and 10mm bolt.

Undo the 10mm bolt and pull the clip out from the bumper.

Repeat on both sides of the vehicle.



**STEP 6**

Use a plastic trim tool to unclip the bumper, there are 2x retaining clips that hold the bumper in place per side.

\*If you do not unclip the retaining clips and just pull the bumper there is a chance you will crack the bumper!\*



**STEP 7**

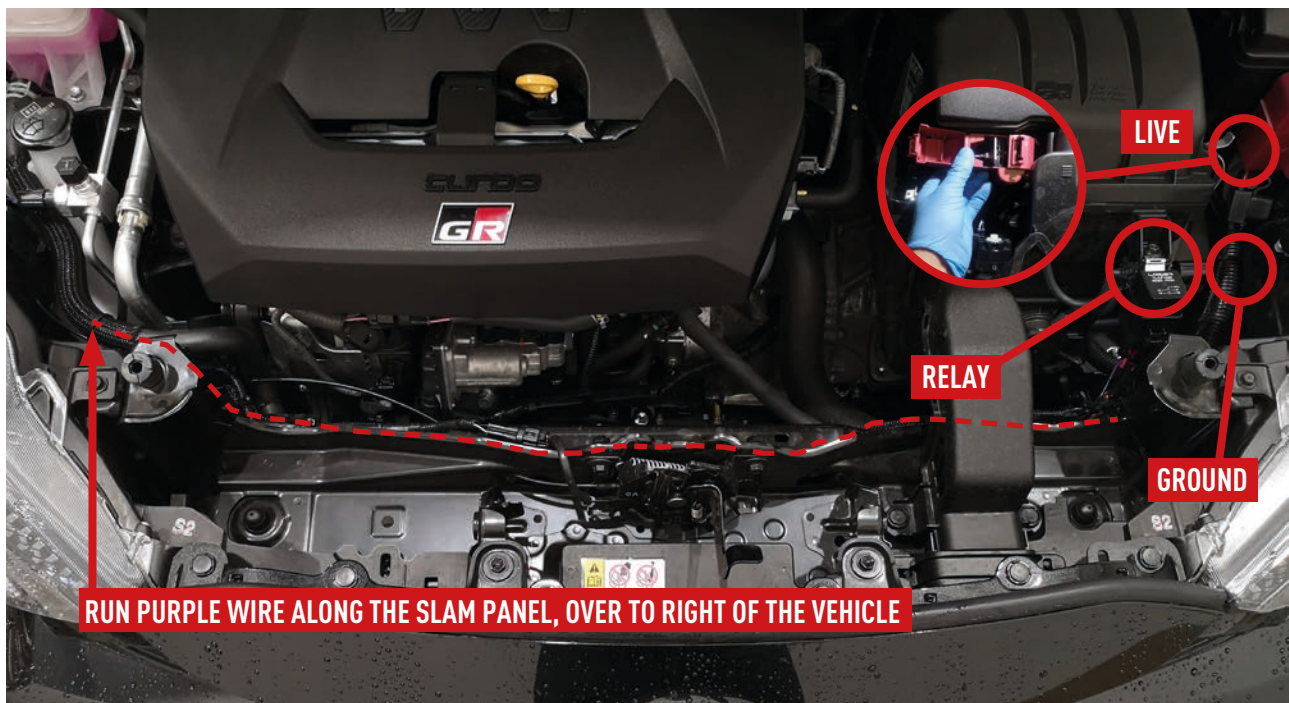


When you remove the bumper, unplug the front fog lights but **do not** unplug the Radar unit.

Set the bumper to one side.

**WIRING YOUR LAMP**

Connect the Lazer wiring harness as shown below and mount the relay close to the battery:







**STEP 1**

The purple highbeam wire from the Lazer wiring kit will need to go through the vehicle cable grommet, located as shown.



**STEP 2**

Using a metal rod or hanger, Push through a hole into the cable grommet where the purple wire will go.



**STEP 3**

Tape the relay trigger wire to the coat hanger/welding rod ensuring it is taped as tight as possible.

Spray some lubricant over the tape and trigger wire, this will help the cable pass through the grommet easily.



**STEP 4**

Push the metal rod and wires through the grommet, the cable should fall into the drivers side footwell.



**STEP 5**

Once located, pull the hanger/rod through the grommet, the trigger cable will be pulled through using this method. Once it's through, un-tape the trigger wire.



**STEP 6**

Using a plastic trim tool, unclip the dashboard end trim.



**STEP 7**

Unclip the lower dash trim to reveal the right hand screw for the clock trim. Undo the screw.



**STEP 8**

Use a plastic trim tool to remove the small black trim on the passenger side dash.



**STEP 9**

Gently unclip the long dash trim to reveal the left hand screw of the clock trim

Undo the clock trim screw



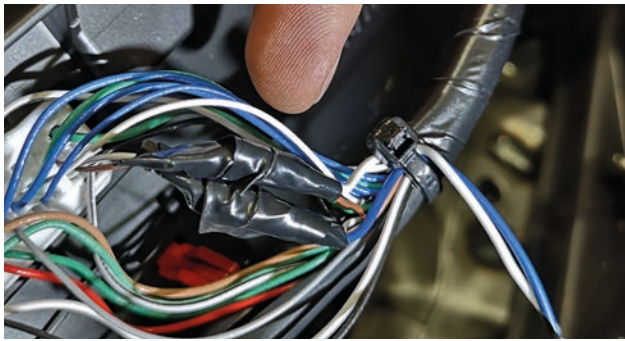
**STEP 10**

Lift up the clock trim and pull away from the clocks



### STEP 11

Undo the 2x retaining screws and pull the clocks forward.



### STEP 12 - CAN INFORMATION

The Can connections are located on the rear of the clocks. Can Hi= Brown / Can Lo= White

The brown and white CAN wires should be easy to identify as they will be twisted together.

Be sure to only connect 1x CAN wire at a time.

### STEP 12.1 - CAN INFORMATION



Live for the Can Interface is taken from the Black wire on the OBD port.





## FITTING YOUR LAMP



### STEP 1

The included 80mm bolts will need to be cut down to between 55mm - 60mm, so that they do not strike the Air-conditioning Radiator.



### STEP 2

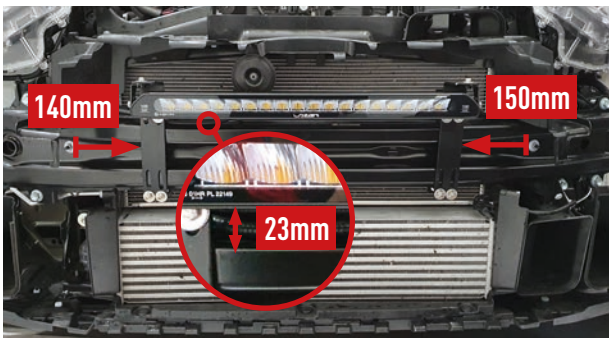
The brackets will need to be assembled around the vehicles crash bar as shown.



### STEP 3

Install the side brackets onto the bumper beam brackets.

The side brackets should be installed upside down in the 1st slot closest to the side of the vehicle, leaving 22mm gap in front of the side bracket in the slot.



### STEP 4

Install and position the bumper beam brackets as shown on the crashed bar and mount the Linear-18 onto the side brackets.



### STEP 5

Test lamp is working correctly before re-assembling vehicle.





**LAZER**  
HIGH PERFORMANCE LIGHTING

[WWW.LAZERLAMPS.COM](http://WWW.LAZERLAMPS.COM)

+44 (0)1992 677374  
[sales@lazerlamps.com](mailto:sales@lazerlamps.com)

Lazer Lamps Ltd, Units 1&2 Harlow Mill Business Centre,  
Riverway, Harlow, Essex. CM20 2FD. United Kingdom



MADE IN THE UK



/LAZERLAMPS



/LAZERLAMPS