

# LAZER

HIGH PERFORMANCE LIGHTING



## RHINO ROOF RACK MOUNTING KIT

---

FITTING INSTRUCTIONS

## TECHNICAL SUPPORT

aaron@lazerlamps.com / sales@lazerlamps.com  
+44 (0)1992 945601 / +44 (0)1992 677374

## WHAT'S INCLUDED

- 2x Linear Side Mounting Bracket (LH/RH)
- 2x M8 Flat Channel Nuts
- 2x M8 Spring Washers
- 2x M8 Bolts

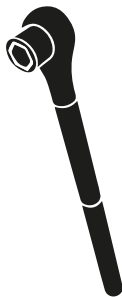
## DIFFICULTY LEVEL



## TOOLS REQUIRED



**DRILL BIT**  
(SWITCH - 20MM)



**METRIC**  
**SOCKET SET**



**WIRE STRIPPERS**  
**AND RATCHET CRIMPERS**



**WIRE CUTTERS**



## PRE-INSTALLATION CHECKS

Ensure battery is disconnected.

## INSTALLATION



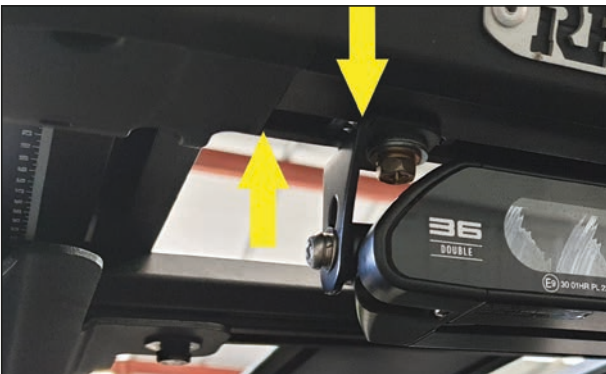
### STEP 1

Assemble the brackets as shown.



### STEP 2

Insert the brackets into the front channel of the roof rack and slide either end.



### STEP 3

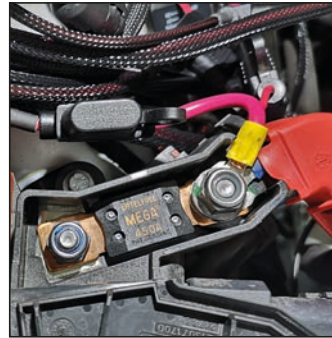
The distance between the brackets and the end caps (as indicated by the arrows) should be 20mm in order to mount the Linear 36 central.



### STEP 4

Mount the lamp onto the brackets using the included torx security bolts.

**WIRING - WITH SPLICE (ECE APPROVED LAMPS ONLY)**

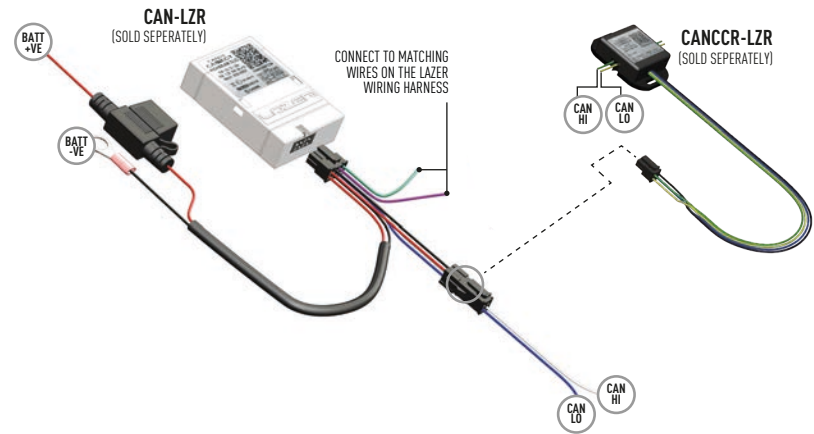


**STEP 1**

Install the relay from the wiring harness and connect the live and earth.

**STEP 2**

For vehicles where it is not possible to locate a 12V high beam signal (at the back of the highbeam trigger), it will be necessary to take the high beam signal from the vehicle's CAN system. For vehicle specific CAN instructions, please download the "CANM8 Connect" App.



**STEP 3**

Drill a 10mm hole near the roof rack in the roof for cable entry (this will require the vehicles headlining to be dropped - **check for air-bag before drilling**). Remove the plug from the lamp cable feed through the cable entry hole (be sure to use the supplied grommet and seal with sealant).

Alternatively, it may be possible to run the cable up the outside of the 'A' pillar or windscreen, without having to drill a hole. If this is the case, route the cable as desired and plug the lamp in (be sure to secure any cables).

**STEP 4**

If you have drilled a hole for cable entry, route the wiring kit cables through the engine bay into the vehicle (via the vehicles cable grommet) and up the 'A' Pillar.

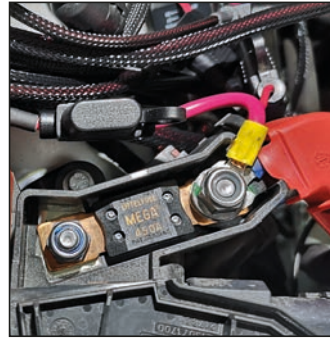
The connection of the wiring kit and lamp can be connected within the headlining of the vehicle.

If you did not drill a cable entry hole, please ignore this step.





## WIRING - WITH SWITCH



### STEP 1

Install the relay from the wiring harness and connect the live and earth.



### STEP 2

Route Switch cable (Will need to remove switch temporary) and light bar cable through the grommet and reinstall grommet.



### STEP 3

Find a suitable location for switch mounting, then drill 20mm hole. Re-connect crimp terminals to switch.



### STEP 4

Drill a 10mm hole near the roof rack in the roof for cable entry (this will require the vehicles headlining to be dropped - **check for air-bag before drilling**). Remove the plug from the lamp cable feed through the cable entry hole (be sure to use the supplied grommet and seal with sealant).

Alternatively, it may be possible to run the cable up the outside of the 'A' pillar or windscreen, without having to drill a hole. If this is the case, route the cable as desired and plug the lamp in (be sure to secure any cables).



### STEP 5

If you have drilled a hole for cable entry, route the wiring kit cables up the 'A' Pillar.

The connection of the wiring kit and lamp can be connected within the headlining of the vehicle.

If you did not drill a cable entry hole, please ignore this step.





**LAZER**  
HIGH PERFORMANCE LIGHTING

[WWW.LAZERLAMPS.COM](http://WWW.LAZERLAMPS.COM)

+44 (0)1992 677374  
[sales@lazerlamps.com](mailto:sales@lazerlamps.com)

Lazer Lamps Ltd, Units 1&2 Harlow Mill Business Centre,  
Riverway, Harlow, Essex. CM20 2FD. United Kingdom



MADE IN THE UK



/LAZERLAMPS



/LAZERLAMPS