

LAZER

H I G H P E R F O R M A N C E L I G H T I N G



FORD TRANSIT CUSTOM (2018+) **BUMPER BEAM INSTALL FOR TRIPLE-R 750**

FITTING INSTRUCTIONS

ANLEITUNG

INSTRUCTIONS

INSTRUCCIONES

TECHNICAL SUPPORT

aaron@lazerlamps.com / sales@lazerlamps.com
+44 (0)1992 945601 / +44 (0)1992 677374

WHAT'S REQUIRED

- FORD TRANSIT CUSTOM 2018+ MOUNTING KIT
- 2x TRIPLE-R 750 STANDARD or ELITE
- TWO-LAMP HARNESS KIT

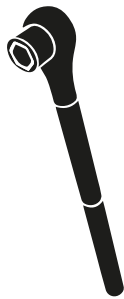
DIFFICULTY LEVEL



TOOLS REQUIRED



DRILL BIT
5MM



METRIC
SOCKET SET



WIRE STRIPPERS
AND RATCHET CRIMPERS



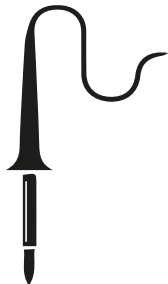
WIRE CUTTERS



RIVET GUN



ALLEN KEY
SIZE: 5



SOLDERING
IRON



T25 / T30 TORX
SCREWDRIVERS



PLASTIC
TRIM TOOLS

PRE-INSTALLATION CHECKS

1. Ensure battery is disconnected.

BUMPER REMOVAL



STEP 1

Remove the x2 T30 screws on each headlight.



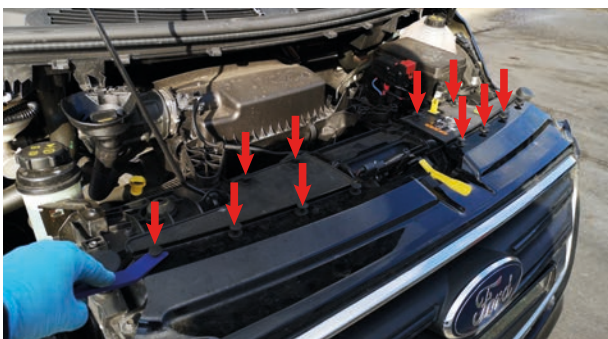
STEP 2

Unplug the headlights on both sides.



STEP 3

Lift out both headlights.



STEP 4

Remove x12 plastic push rivets.



STEP 5

Remove number plate.



STEP 6

Remove the x2 13mm bolts behind number plate.



STEP 7

Remove x4 T30 screws from under bumper.



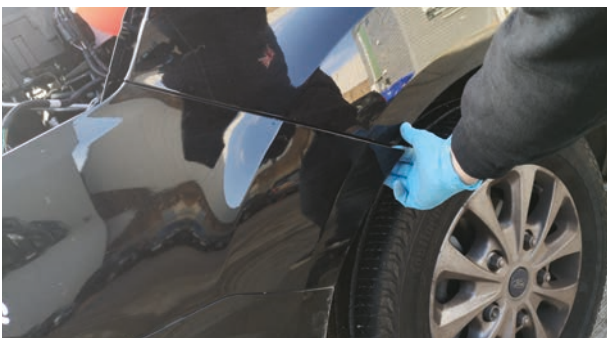
STEP 8

Remove the x2 T25 screws on the inside of both wheel arches.



STEP 9

Unplug bumper loom connector located behind washer reservoir.



STEP 10

Gently pull both corners of the bumper out.



STEP 11

Unclip retaining clip on both sides under headlight.



STEP 12



Pull top centre of bumper up and unclip the retaining clips on both sides of the vehicle.

MOUNTING YOUR LIGHTS



STEP 1



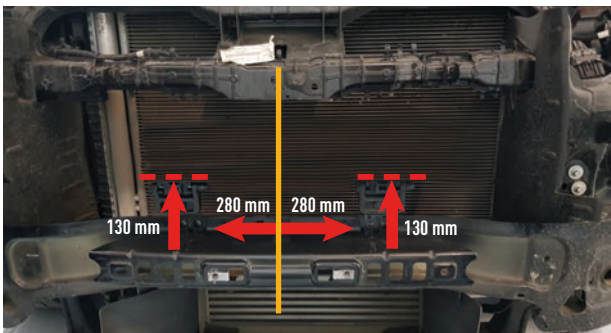
Fix each Centre Mount to the Bumper Beam brackets as shown using the supplied fixtures.



STEP 2



The rotating feature will need to be removed and turned round so that the M5 grub screws are showing at the front of the mount instead of behind.



STEP 3

Mark where you will mount the Bumper Beam Brackets to the bumper beam as per the measurements shown.



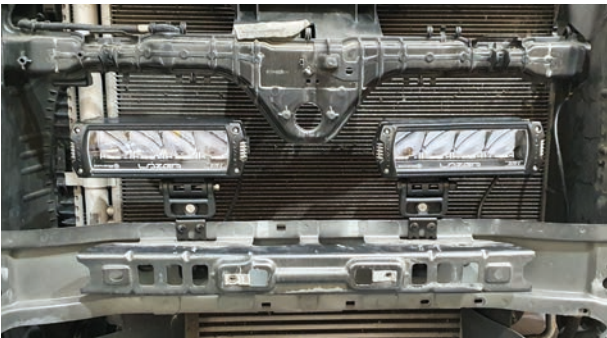
STEP 4

Drill the 5mm pilot holes for the rivets for the Bumper Beam Brackets (2 rivets per bumper beam bracket).



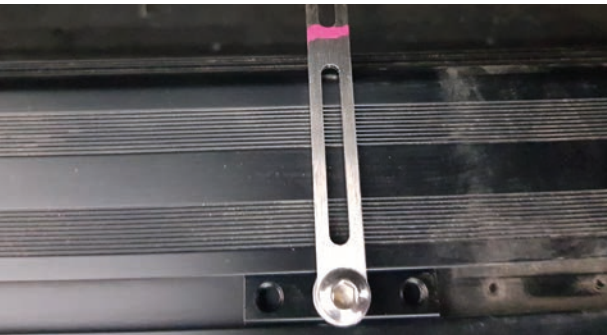
STEP 5

Using a rivet gun, rivet the Bumper Beam Brackets into place.

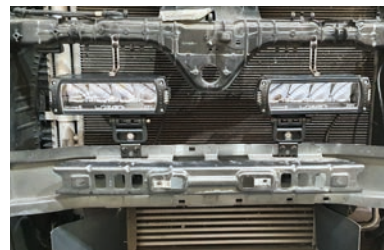


STEP 6

The Triple-R 750's can now slide onto the Centre Mounts and positioned. Once in place, tighten the M5 grub screws on the Centre Mounts.



STEP 7



Assemble Stay bar and place in lamp channel and bend the Stay Bar where you have marked and secure to the vehicle using a self tapping screw.



STEP 8

Re-fit the bumper to the vehicle, ensuring the lights are clearly able to shine through the grille.

WIRING

STEP 1

Live (red wire) should be taken from the 10mm stud next to engine fusebox.



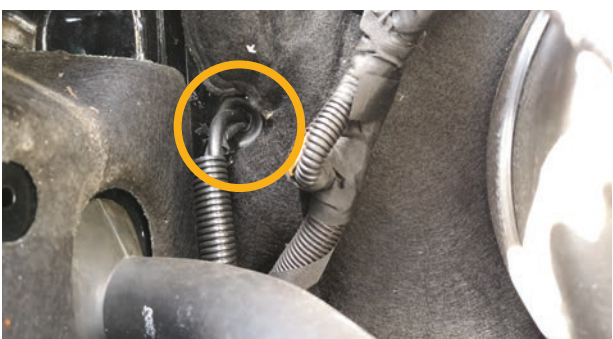
STEP 2

Ground should be taken from 10mm bolt in front of the engine fusebox.



STEP 3

If you would like to use your Triple-R 750's via a switch, you can run the switch cables into the cab through the bulkhead.



STEP 3.1

Alternatively, the Triple-R 750's can be connected directly to your high-beams, the purple wire from the Lazer harness' should be connected to the grey with brown trace wire on the headlight plug shown.



INSTALLATION CHECKS

1. Ensure battery is re-connected properly.
2. ensure lights are working fully before re-assembling vehicle.



LAZER

HIGH PERFORMANCE LIGHTING

Thank you for choosing a Lazer Lamps product.

Vielen Dank dafür, dass Sie sich für ein Produkt von Lazer Lamps entschieden haben.

Merci pour choisir un produit de Lazer Lamps.

Gracias por la seleccion de productos de Lazer Lamps.