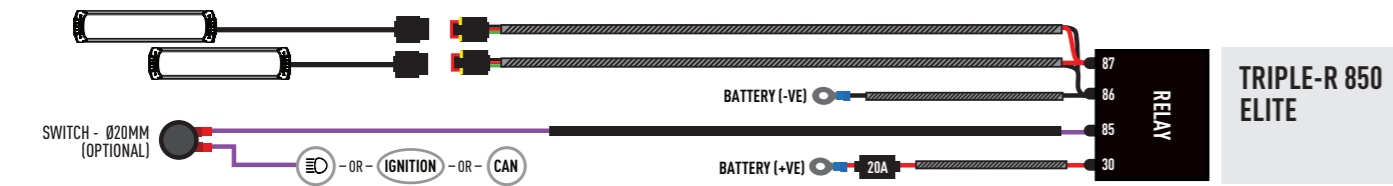
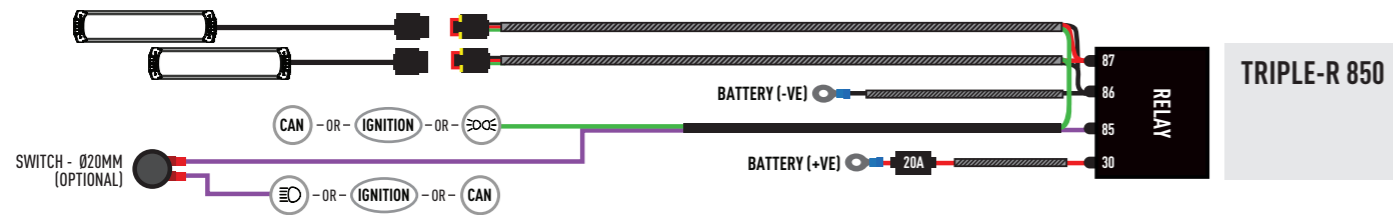


## ELECTRICAL CONNECTION



### LAMP CONNECTOR INFORMATION

TRIPLE-R POSITION LIGHT FUNCTION (OPTIONAL)



### CONNECT TO VEHICLE FACTORY WIRES

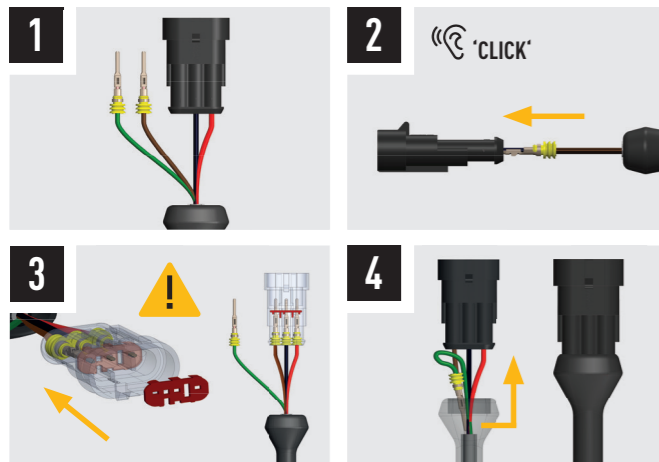
LEVEL 2 HEADLIGHTS ONLY

The Ford Ranger Limited, 2023+ models (with level 2 headlights) has pre-fitted wires available for splicing directly to the high beam and position light, located within the footwell of the left hand side of the vehicle. Please test the blunt cut wires in LHS footwell for the connections (Position light wire will have a constant 12V when the vehicle is running whereas the high beam wire will only have voltage when high beam is activated).



### E9 UNECE REGULATIONS

Please scan the QR code to view all UNECE Certificates and information.



**LAZER**  
HIGH PERFORMANCE LIGHTING  
[WWW.LAZERLAMPS.COM](http://WWW.LAZERLAMPS.COM)

We appreciate your purchase of a Lazer Lamps product, and value your feedback. If you would like to leave feedback on your Lazer experience, please head to the relevant product page on our website [www.lazerlamps.com](http://www.lazerlamps.com).

T +44 (0) 1992 677374  
E [sales@lazerlamps.com](mailto:sales@lazerlamps.com)

Lazer Lamps Ltd, Calder House, Central Road  
Harlow, Essex, CM20 2ST, UK

**MADE IN THE UK** /LAZERLAMPS

**LAZER**  
HIGH PERFORMANCE LIGHTING

## FORD RANGER LIMITED (2023+) GRILLE KIT

### FITTING INSTRUCTIONS



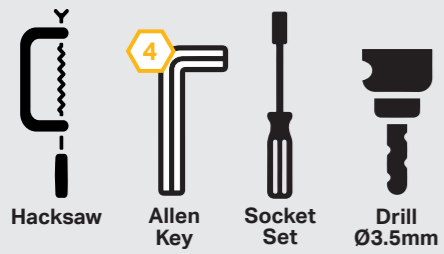
## WHAT'S INCLUDED

- 4x Grille Mounting Brackets
- 4x Cutter Guides
- Anti-Theft Fasteners & Key
- Fitting Instructions

### Additionally - Kit Includes:

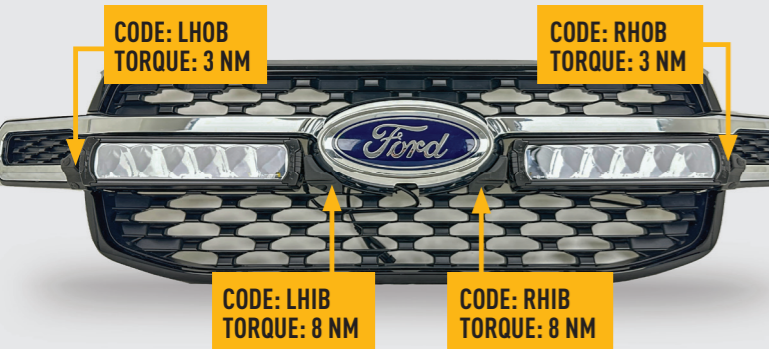
- 2x Triple-R 850 LED Lights
- 1x Two-Lamp Wiring Kit

## TOOLS REQUIRED



## TORQUE VALUES

The code is written on the inside of each bracket (see example).



## INSTALLATION PROCESS - Install should be completed with the grille left on the vehicle.

